

• 1924

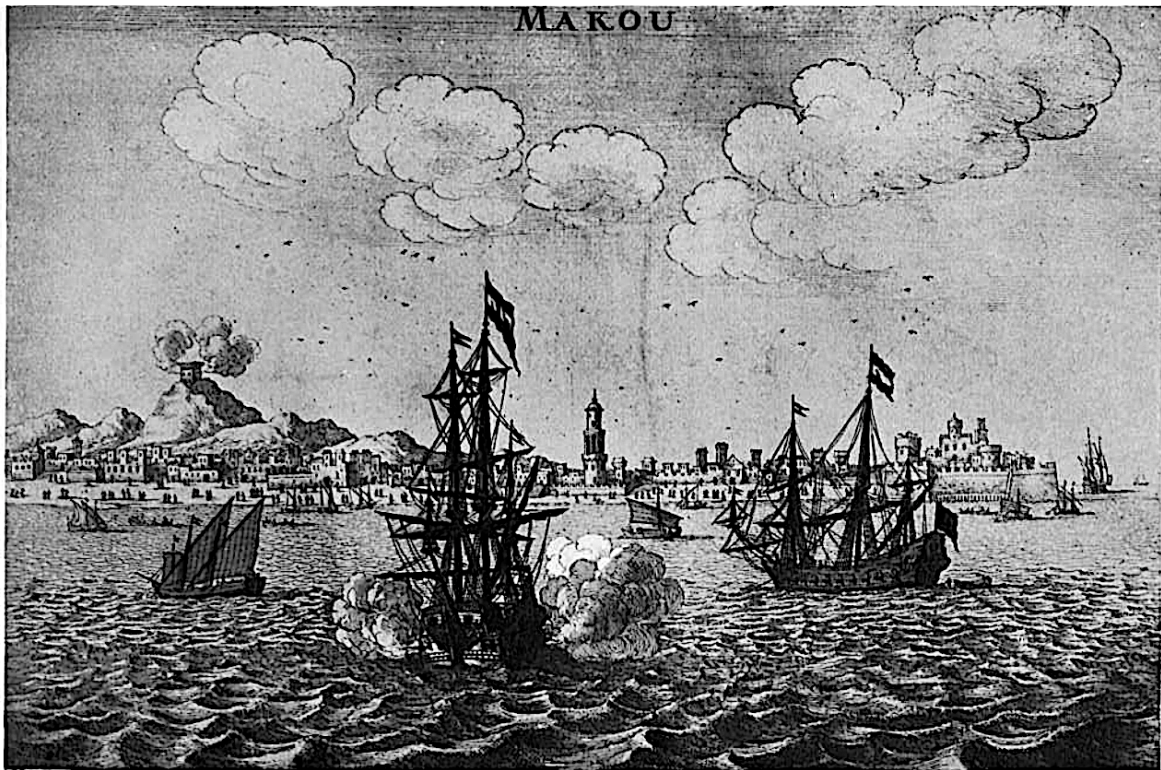
ORANGE, James.

*The Chater Collection; Pictures Relating to China, Hongkong, Macao, 1655-1860; with Historical and Descriptive Letterpress by James Orange (illustrated).*

London: Thornton Butterworth, 1924 [Macao: pp. 275-319, 29 ills.].

[Pr.; English]

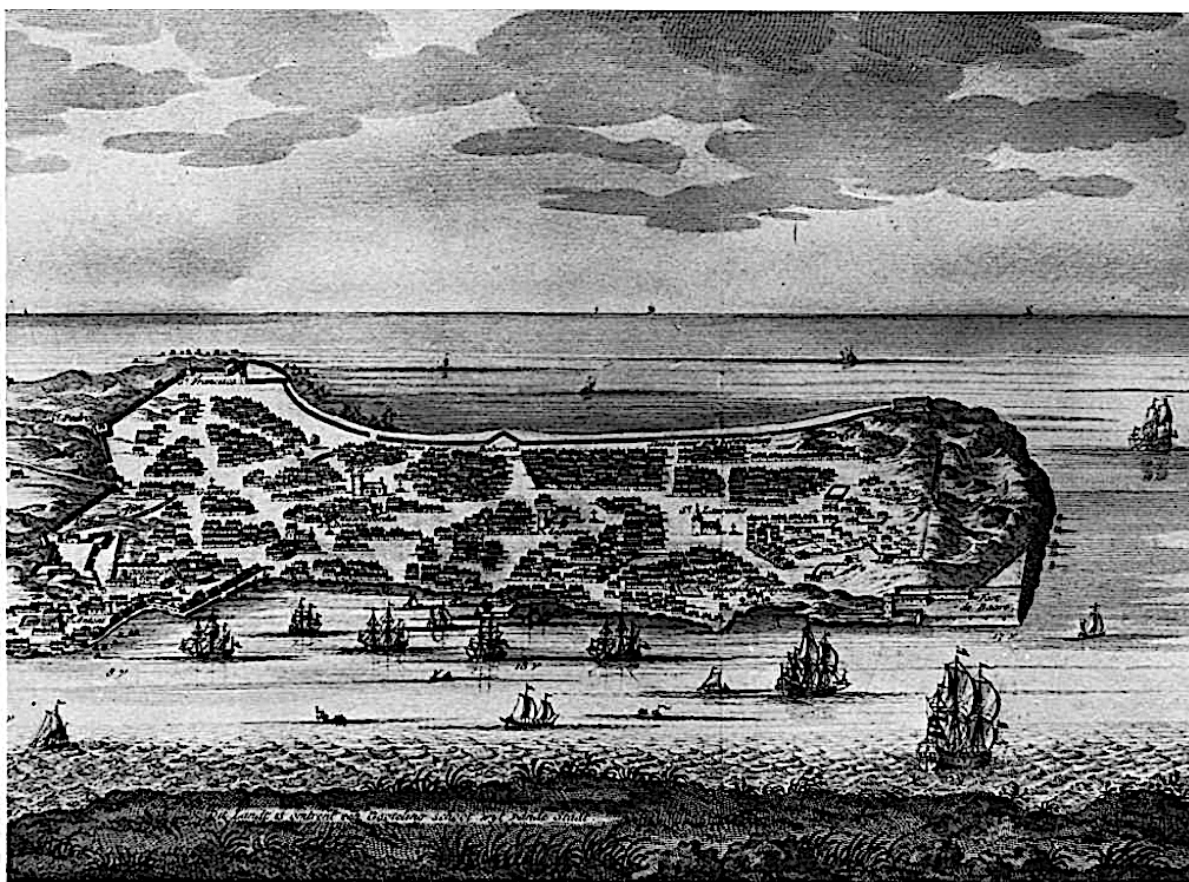
Fitzwilliam Museum, Reference Collection, N5250.C39



No. 1. Macao. c. 1655. Engraving.

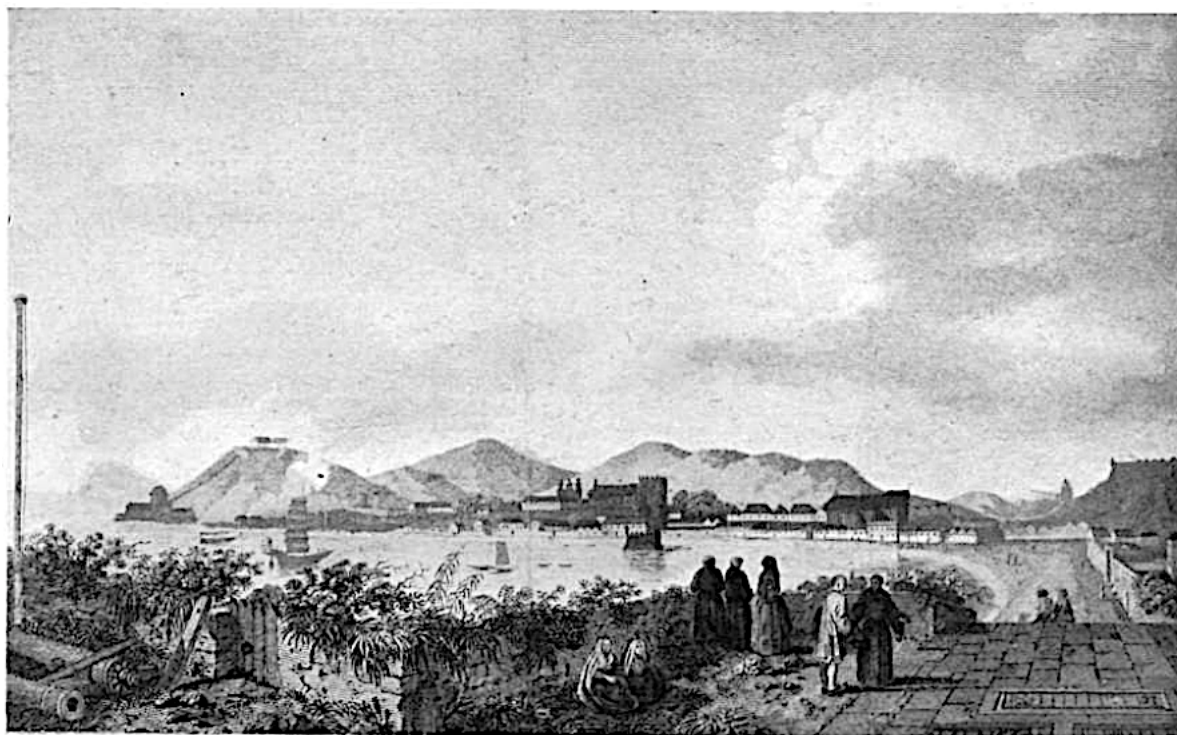
J. Nieuhoff.





No. 2. Macao. c. 1726. Engraving.

Dutch.



No. 3. View of Macao. c. 1770. Engraving

Lowry.





No. 4 (1). Inner Harbour, Macao. c. 1780. Coloured Engraving.

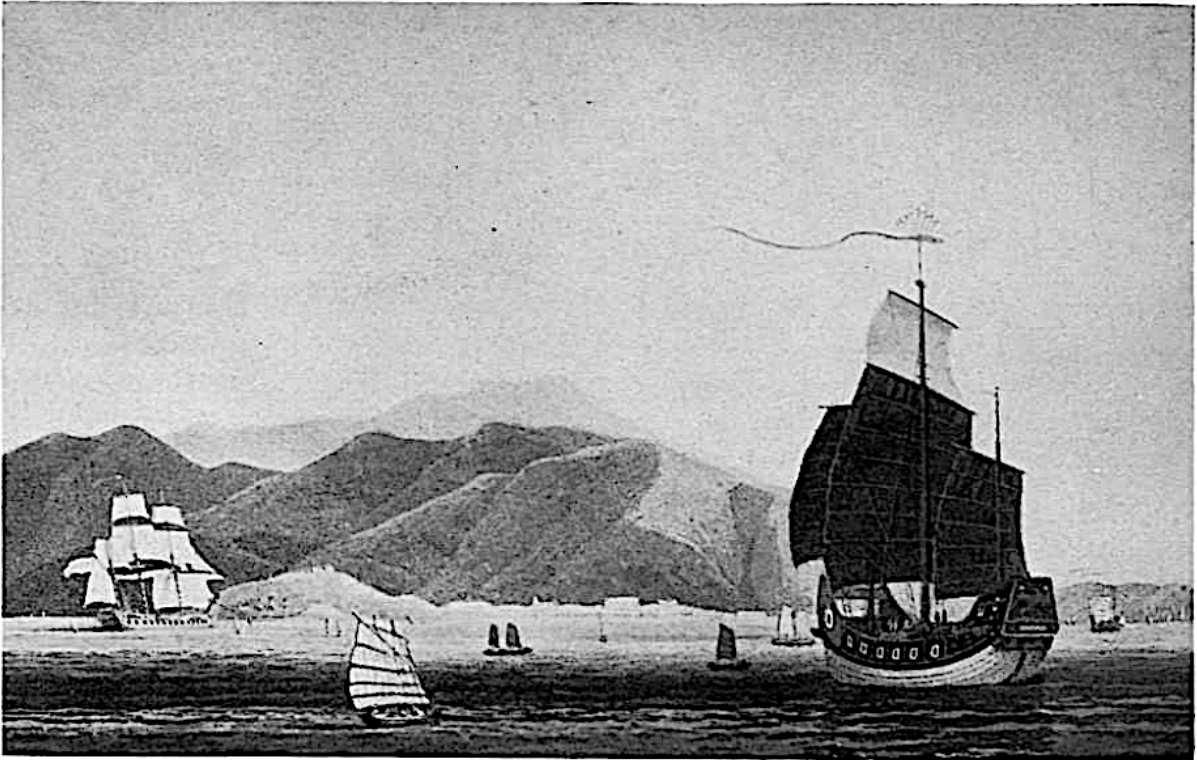
J. Webber.



No. 4 (2). Inner Harbour, Macao. c. 1780. Coloured Engraving.

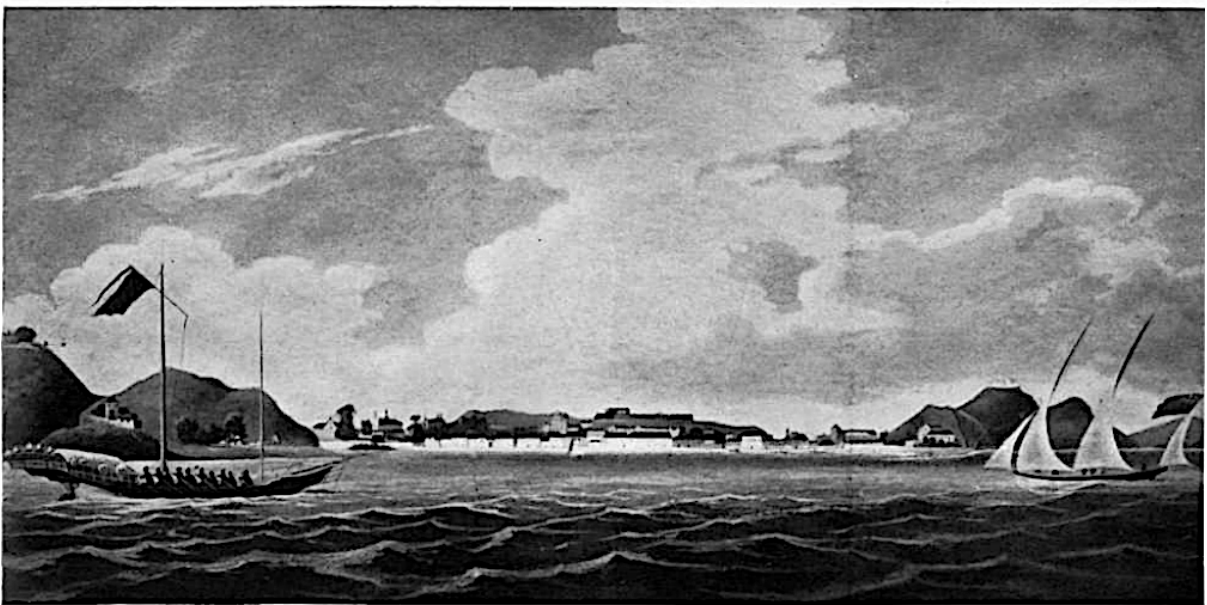
J. Webber.





No. 5. Macao. c. 1785. Coloured Mezzotint.

T. & W. Daniell.



No. 6. City of Macao. c. 1790. Aquatint.

T. S. Parry.





No. 9. Church of S. Antonio. 1811. Coloured Mezzotint.

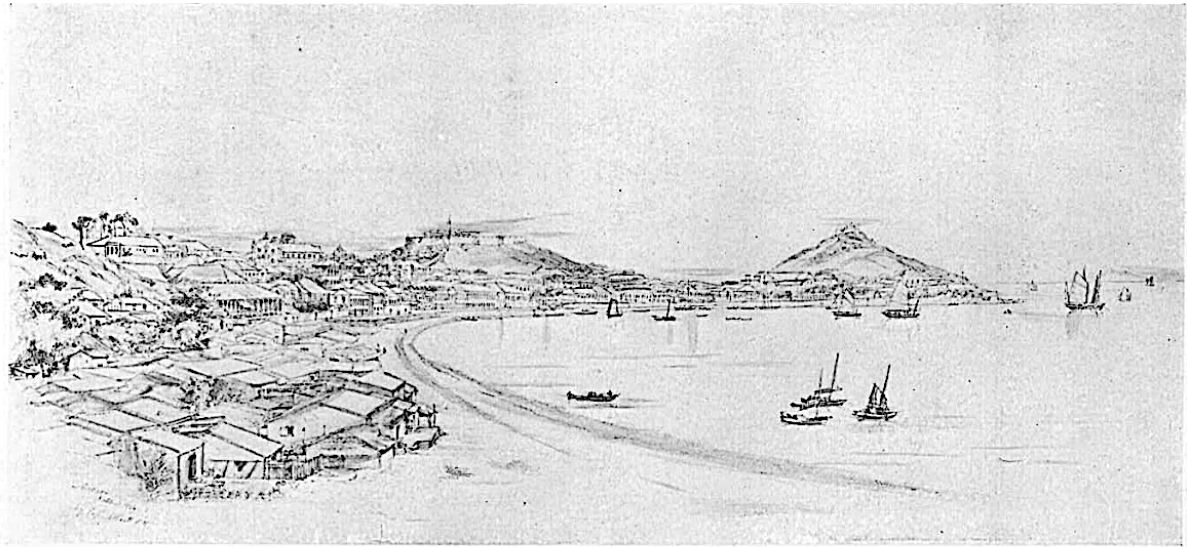
J. Wathen.



No. 17. View of City from the North. 1824. Pencil Drawing.

Capt. R. Elliot, R.N.





No. 18. View of City from the South. 1824. Pencil Drawing.

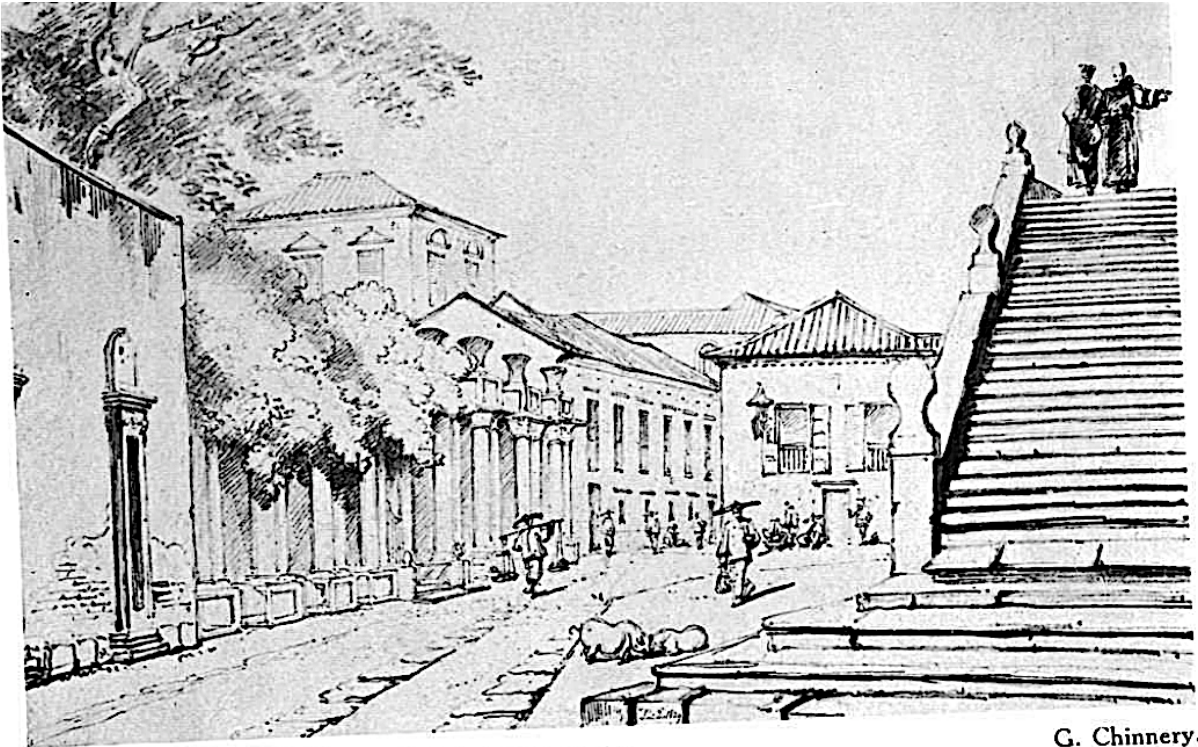
Capt. R. Elliot, R.N.



No. 19. View of Macao. 1826. Water-colour.

R. Beechey, R.N.





No. 20. Mr. Plowden's House. 1829. Pencil Drawing.

G. Chinnery.



No. 21. Street Scene. c. 1829. Pen and Ink Drawing.

G. Chinnery.





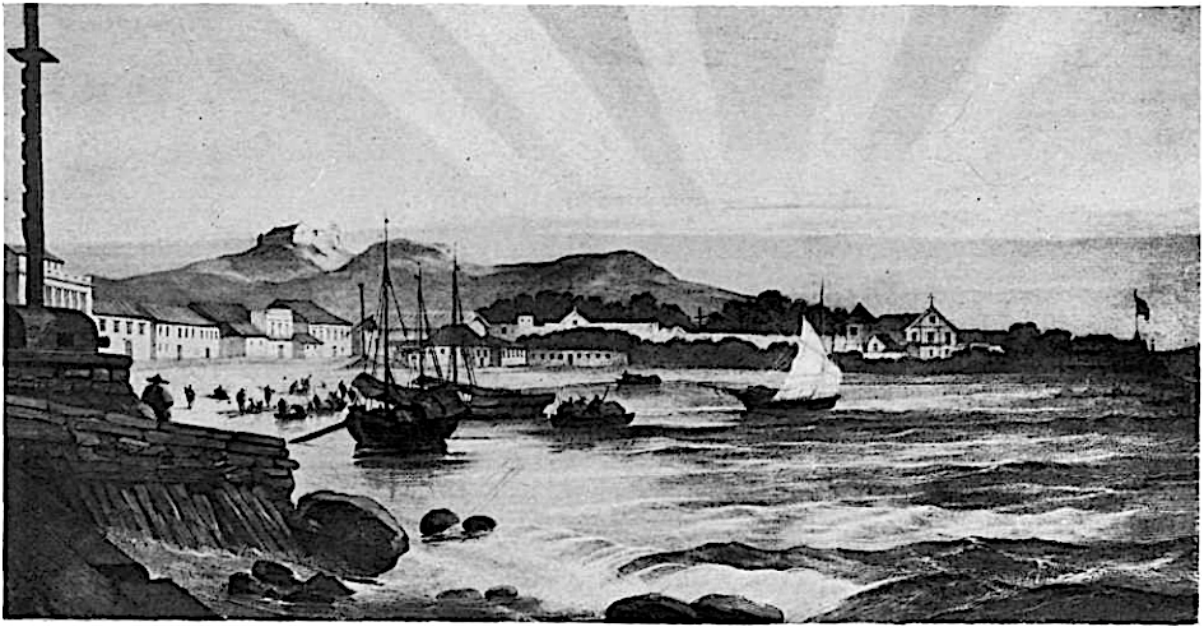
No. 24. George Chinnery, R.H.A. c. 1830.



No. 26 (1). Praya Grande from the North. c. 1830. Coloured Lithograph.

G. Chinnery.





No. 26 (2). Praya Grande from the South. c. 1830. Coloured Lithograph.

G. Chinnery.



No. 27. Front of Temple, Macao. 1839. Lithograph.

A. Borget.





No. 28. General View of Macao. 1839. Lithograph.

A. Borget.



No. 29. Macao from the Sea. 1839. Lithograph.

A. Borget.





No. 30. Habitations of the Poor, Macao. 1839. Lithograph.

A. Borget.



No. 31. Street, Macao. 1839.

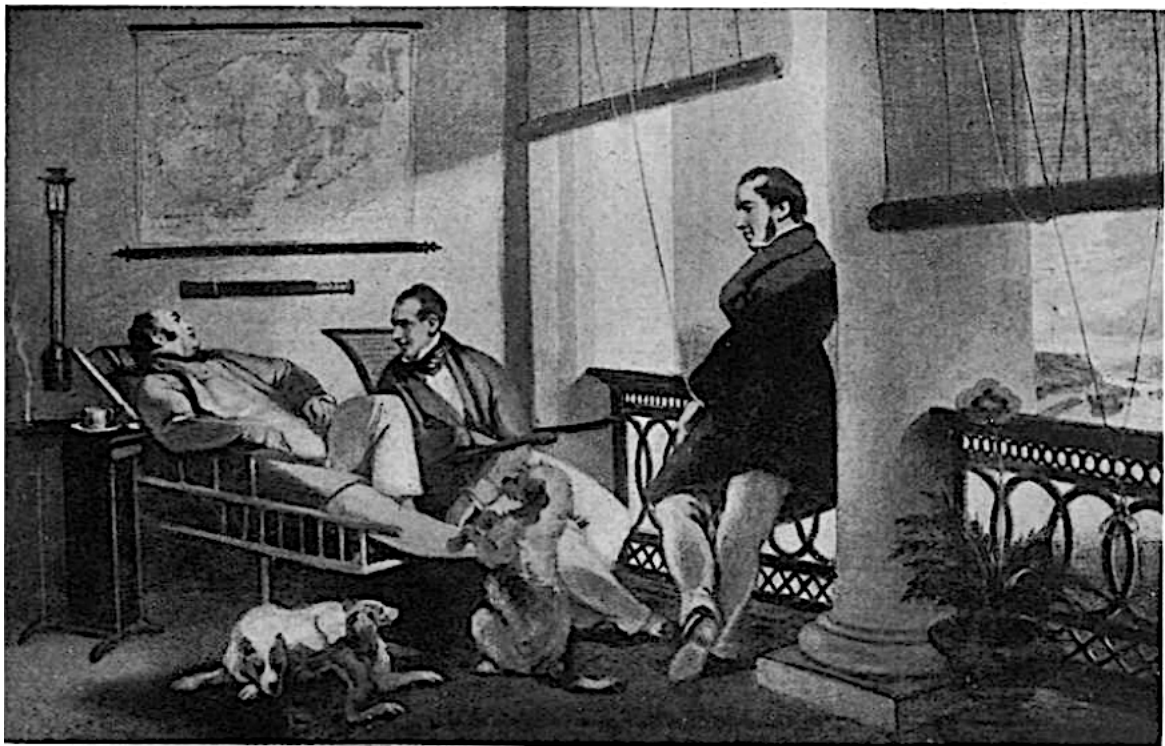


No. 31. Temple, Macao. 1839.





No. 31. Chinese Camp outside Macao. 1839. Lithographs. A. Borget.



No. 33. Dent's Verandah. c. 1840. Oil.

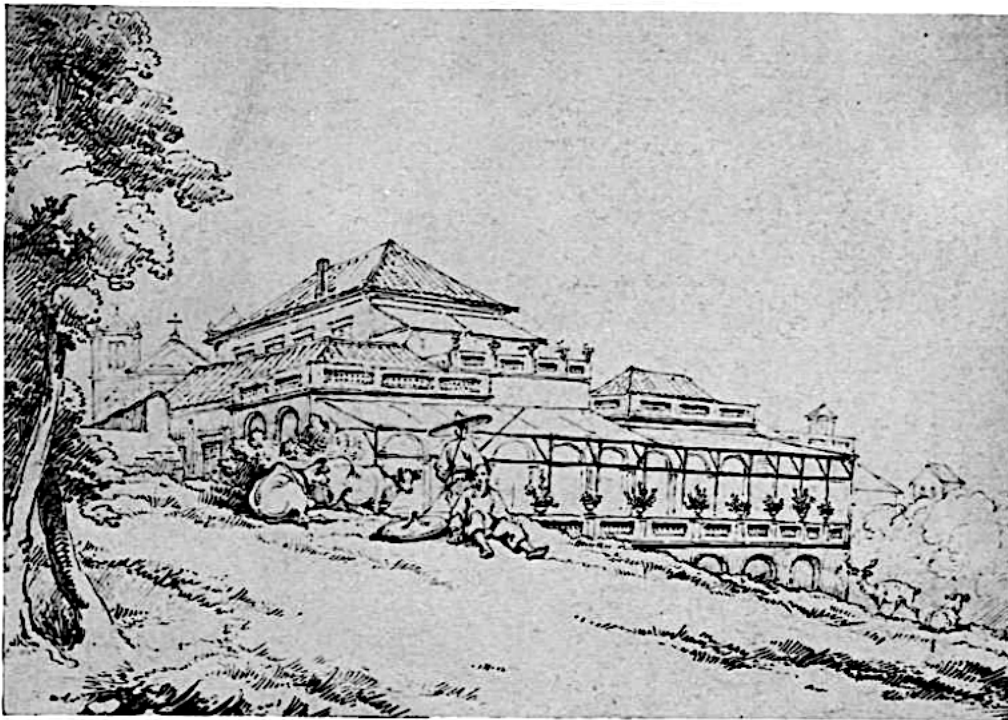
G. Chinnery.





No. 37. Praya Grande. c. 1841. Engraving.

T. Allom - Lt. White.



No. 39. European House. 1844. Pen and Ink Drawing.

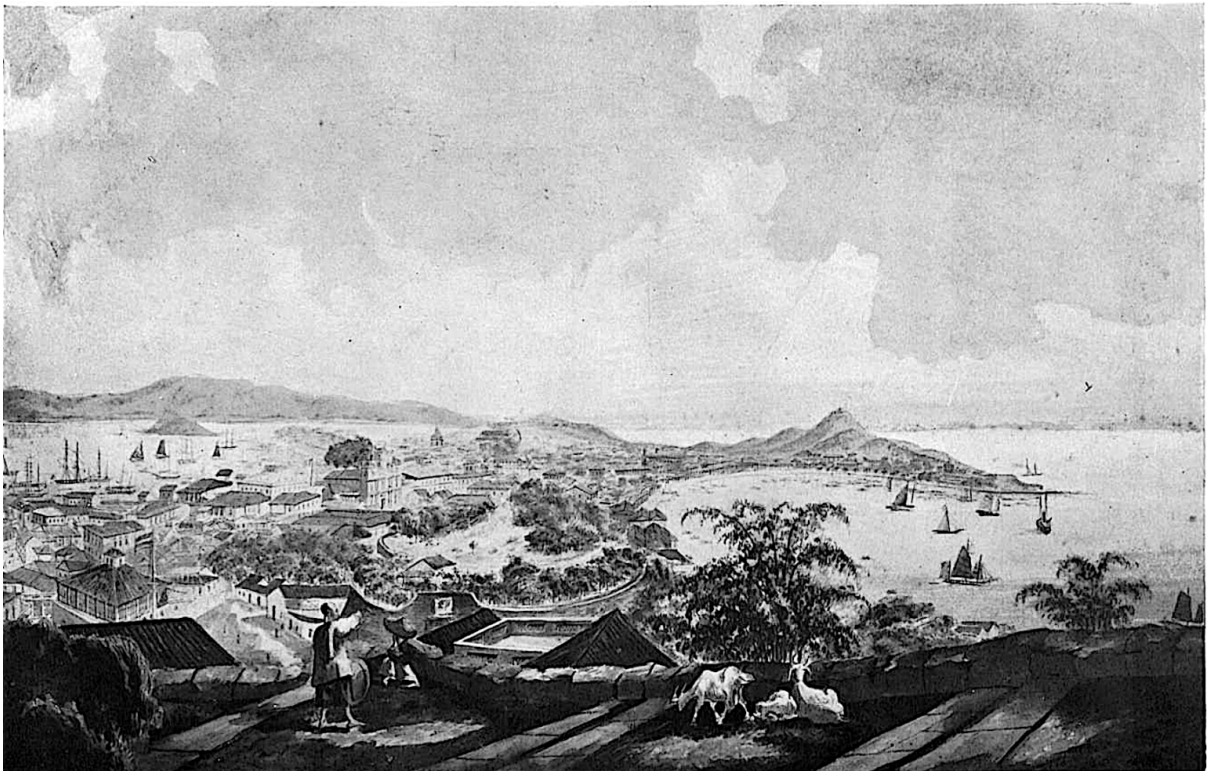
G. Chinnery.





No. 40. Entrance to Government House. 1845. Sepia Wash Drawing.

E. Ashworth.



No. 41. Macao. c. 1845. Water-colour.

M. A. Baptista.





No. 42. Praya Grande, Macao. 1847. Coloured Lithograph.

G. R. West.